



INDÚSTRIAS ARTEB S/A
LABORATÓRIO CORPORATIVO
 Av. Piraporinha 1221 – Vila Olga
 São Bernardo do Campo -SP
 Tel. (11) 4341-9841 Fax (11) 4341-9841
 e-mail: laboratorio@arteb.com.br

LABORATORY'S REPORT



PHYSICAL LABORATORY ()
 CHEMICAL LABORATORY ()
 PERFORMANCE LABORATORY ()
 PHOTOMETRIC LABORATORY (X)

DENOMINATION: HEADLAMP FORD ECOSPORT
 Note: Commercial name of the models that use this headlamp design according to: Anexo_3687_Lista de Aplicação.
CODE / NUMBER: B515

CUSTOMER: Lumileds Iluminação do Brasil Ltda
SOLICITED BY: Leonardo Figueiredo

CUSTOMER ADDRESS: Al. Rio Negro, 585 Ed. Jaçari - 4º A Conjunto 44,45 CEP: 06454-000 Barueri - SP – Brazil

SS Nº **NUMBER OF SAMPLES:** 02 **ANALYST:** ALEX FONSECA DE OLIVEIRA

BEGIN'S DATE: 06/7/2018 **TEMPERATURE:** 23,0 °C **HUMIDITY:** 60%

EQUIPAMENTOS UTILIZADOS:
 PHOTOMETER ILFF 002 - CERTIFICATE: 85.278 / 85.279 /
 CALIBRATE: 03/30/2017 - NEXT CALIBRATION: 30/03/2019
 POWER SUPPLY ILFF 002/02 - CERTIFICATE: R0674 / 2017
 CALIBRATED: 27/03/2017– - NEXT CALIBRATION: 27/03/2019
 SPECTRORADIOMETRO EL-10 - CERTIFICATE: L-001-17
 CALIBRATE: 09/20/2017 - NEXT CALIBRATION: 20/09/2018

SPECIFICATIONS: ECE R112 / CONTRAN

OBSERVATIONS: Lumileds Iluminação Brasil LTDA are responsible about the control of Anexo_3687_Lista de Aplicação.

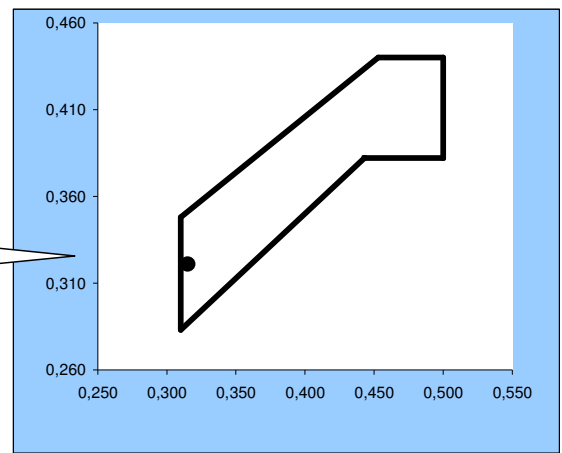
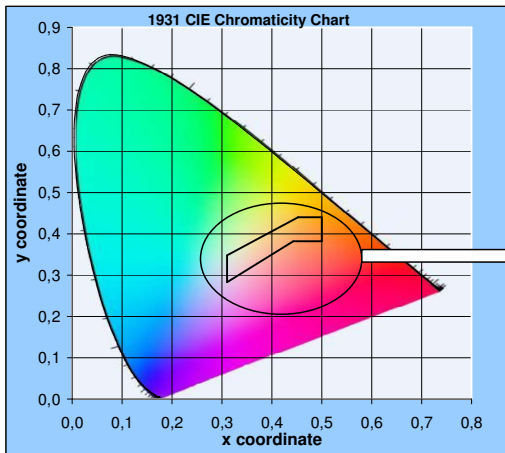
INFORMATION ABOUT LOW BEAM & HIGH BEAM :
VOLTAGE : 13,50 V
PRODUTO: LED-HL [-H4],
PART NUMBER 11342xxxx
MARCA: PHILIPS



The results presented in the present Document have restricted significance and they are only applied to the rehearsed sample. The reproduction of the document for another ends can only be made integrally, without any alteration

COLORIMETRY ECE R112 / CONTRAN 227/07

LOW BEAM / HIGH BEAM LED COLOUR (WHITE) TEMP: K 7650



Standardization	Limit the Green	$y = 0.150 + 0.640 x$	X :	0,315
	Limit with the Green-Yellowish	$y = 0.440$	Y :	0,321
	Limit with Yellow	$x = 0.500$	Z :	0,364
	Limit with Purpura-Reddish	$y = 0.382$	Values	
	Limit with Purpura-Reddish	$y = 0.050 + 0.750 x$		
	Limit with Blue	$x = 0.310$		

RESULT: APPROVED

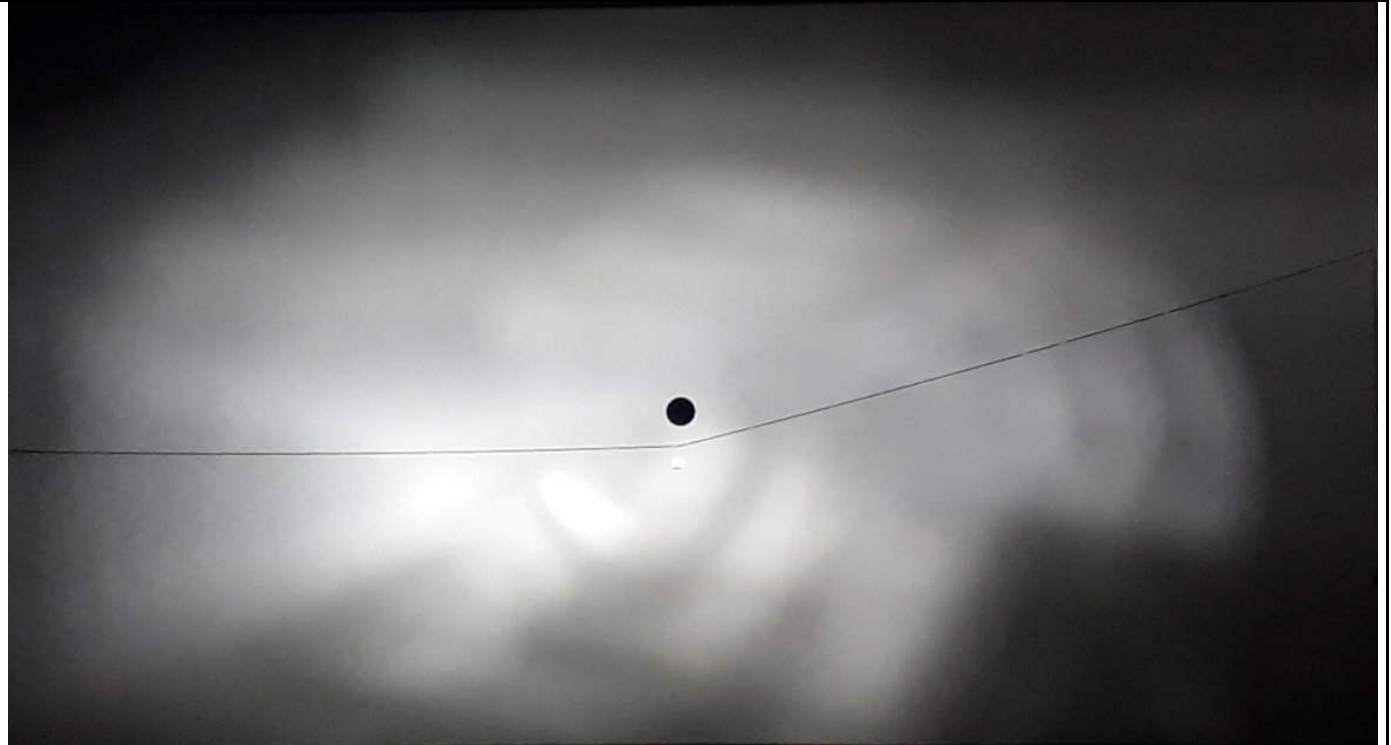
The point must be within the approved area.

The results presented in the present Document have restricted significance and they are only applied to the rehearsed sample. The reproduction of the document for another ends can only be made integrally, without any alteration

Projection LOW BEAM

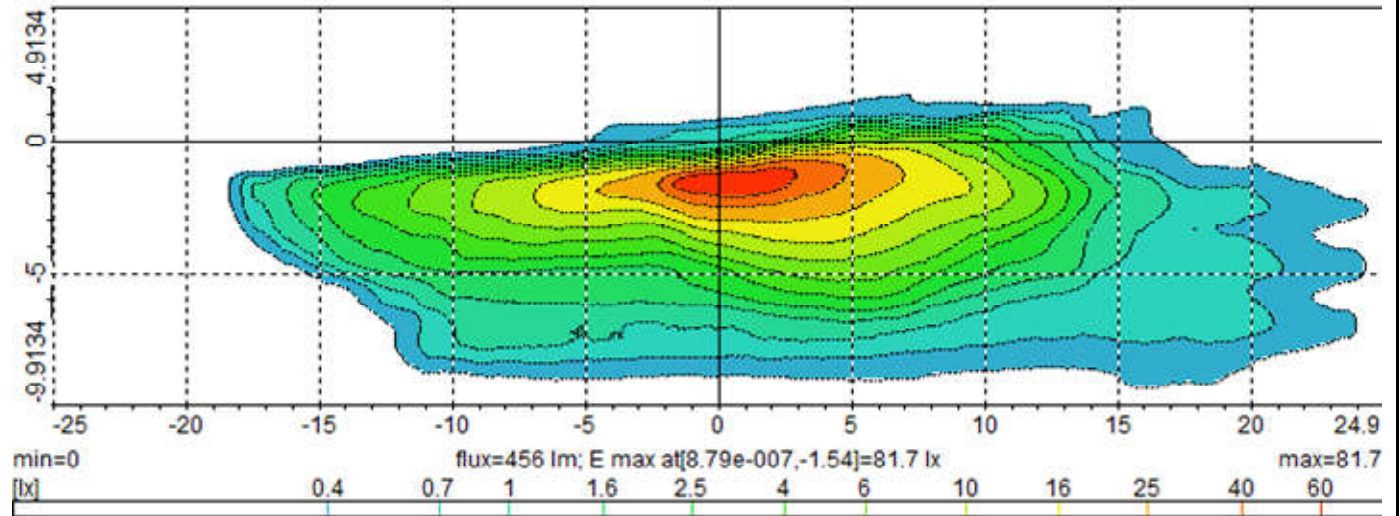


Projection HIGH BEAM

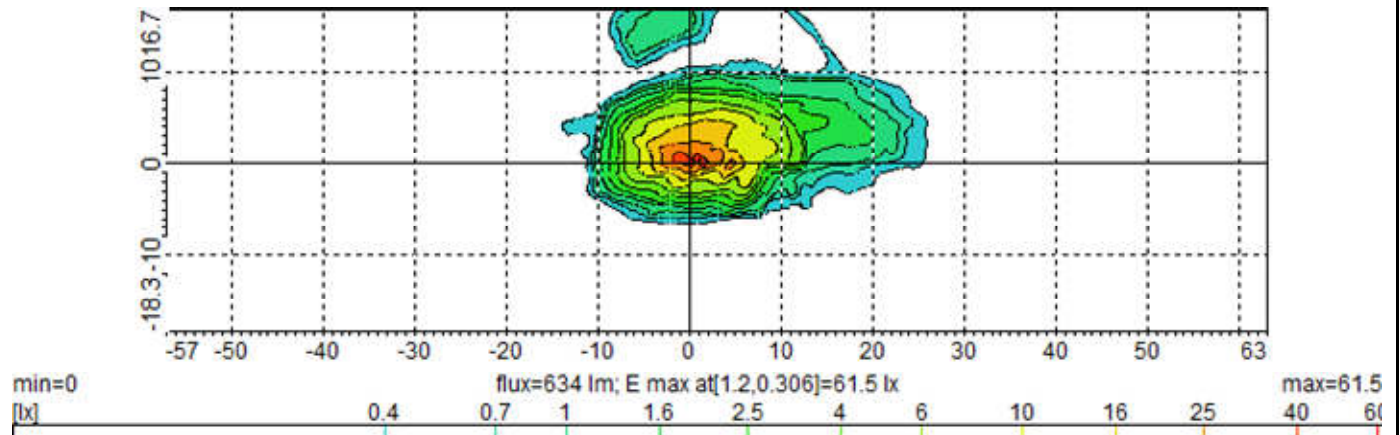


The results presented in the present Document have restricted significance and they are only applied to the rehearsed sample. The reproduction of the document for another ends can only be made integrally, without any alteration

ISOLUX Wall View Low Beam



ISOLUX Wall View High Beam



EXIT DATE: 11/07/2018

ANALYST:
ALEX FONSECA DE OLIVEIRA

SUPERVISION:
JARBAS ENZENBERG
MÁRCIO CLAUDINO

COPIES DISTRIBUTION:
Leonardo Figueiredo

The results presented in the present Document have restricted significance and they are only applied to the rehearsed sample. The reproduction of the document for another ends can only be made integrally, without any alteration

ANEXO - LABORATORY'S REPORT Nº 3687-18

Lista de marca/modelos/versão/ano equipadas com farol utilizado no ensaio Nº 3687-18

Ford EcoSport FreeStyle 1.6 16V Flex 2012, 2013, 2014, 2015, 2016, 2017
Ford EcoSport FreeStyle 1.6 16V Flex PowerShift 2015, 2016, 2017
Ford EcoSport FreeStyle 2.0 16V Flex 2012, 2013, 2014, 2015
Ford EcoSport FreeStyle 2.0 16V Flex PowerShift 2014, 2015, 2016
Ford EcoSport FreeStyle 4WD 2.0 16V Flex 2012, 2013, 2014, 2015, 2016, 2017
Ford EcoSport S 1.6 16V Flex 2012, 2013, 2014, 2015
Ford EcoSport SE 1.6 16V Flex 2012, 2013, 2014, 2015, 2016, 2017
Ford EcoSport SE 1.6 16V Flex PowerShift 2015, 2016, 2017
Ford EcoSport SE 2.0 16V Flex PowerShift 2012, 2013, 2014, 2015, 2016, 2017
Ford EcoSport SE Direct 1.6 16V Flex PowerShift 2015, 2016, 2017
Ford EcoSport SE Direct 2.0 16V Flex PowerShift 2014, 2015, 2016, 2017
Ford EcoSport Titanium 1.6 16V Flex 2012, 2013, 2014, 2015
Ford EcoSport Titanium 1.6 16V Flex PowerShift 2015, 2016
Ford EcoSport Titanium 2.0 16V Flex 2012, 2013, 2014, 2015
Ford EcoSport Titanium 2.0 16V Flex PowerShift 2012, 2013, 2014, 2015, 2016, 2017

Versão: 0	Atualização: Ago/2018	Resp: Lumileds Iluminação Brasil Ltda
-----------	-----------------------	---------------------------------------