



INDÚSTRIAS ARTEB S/A
LABORATÓRIO CORPORATIVO
 Av. Piraporinha 1221 – Vila Olga
 São Bernardo do Campo -SP
 Tel. (11) 4341-9841 Fax (11) 4341-9841
 e-mail: laboratorio@arteb.com.br

LABORATORY'S REPORT



PHYSICAL LABORATORY ()
 CHEMICAL LABORATORY ()
 PERFORMANCE LABORATORY ()
 PHOTOMETRIC LABORATORY (X)

DENOMINATION: **HEADLAMP GM ONIX** CODE / NUMBER: ONIX
 Note: Commercial name of the models that use this headlamp design according to: Anexo_3690_Lista de Aplicação.

CUSTOMER: **Lumileds Iluminação do Brasil Ltda** SOLICITED BY: **Leonardo Figueiredo**

CUSTOMER ADDRESS: **Al. Rio Negro, 585 Ed. Jaçari - 4º A Conjunto 44,45 CEP: 06454-000 Barueri - SP – Brazil**

SS Nº NUMBER OF SAMPLES: 02 ANALYST: **ALEX FONSECA DE OLIVEIRA**

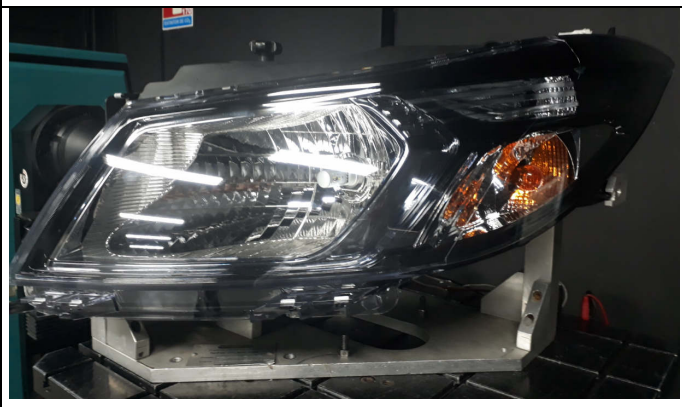
BEGIN'S DATE: 22/06/2018 TEMPERATURE: 23,0 °C HUMIDITY: 60%

EQUIPAMENTOS UTILIZADOS:
 PHOTOMETER ILFF 002 - CERTIFICATE: 85.278 / 85.279 /
 CALIBRATE: 03/30/2017 - NEXT CALIBRATION: 30/03/2019
 POWER SUPPLY ILFF 002/02 - CERTIFICATE: R0674 / 2017
 CALIBRATED: 27/03/2017 - - NEXT CALIBRATION: 27/03/2019
 SPECTRORADIOMETRO EL-10 - CERTIFICATE: L-001-17
 CALIBRATE: 09/20/2017 - NEXT CALIBRATION: 20/09/2018

SPECIFICATIONS: ECE R112 / CONTRAN

OBSERVATIONS: Lumileds Ilumination Brasil LTDA are responsible about the control of Anexo_3690_Lista de Aplicação.

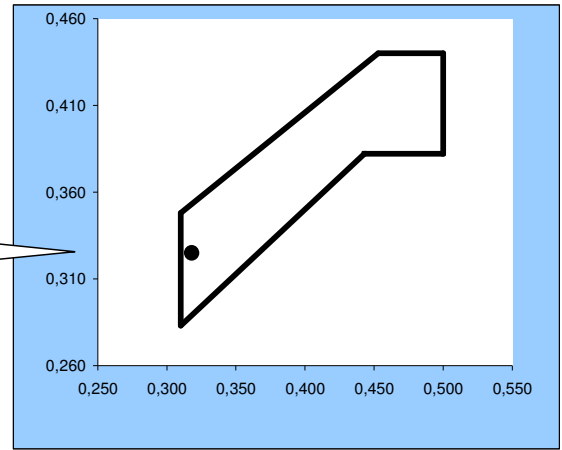
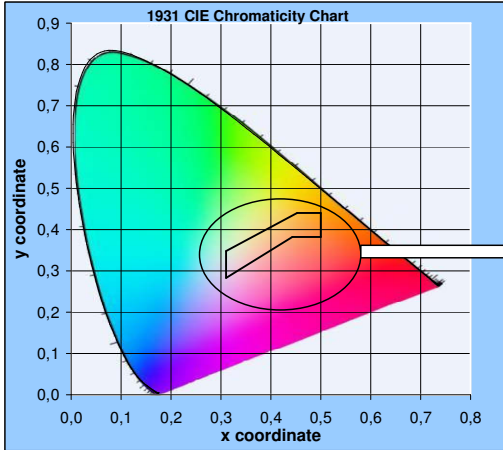
INFORMATION ABOUT LOW BEAM & HIGH BEAM :
 VOLTAGE : 13,50 V
 PRODUTO: LED-HL [-H4],
 PART NUMBER 11342xxxx
 MARCA: PHILIPS



The results presented in the present Document have restricted significance and they are only applied to the rehearsed sample. The reproduction of the document for another ends can only be made integrally, without any alteration

COLORIMETRY ECE R112 / CONTRAN 227/07

LOW BEAM / HIGH BEAM LED COLOUR (WHITE) TEMP: 7450 K

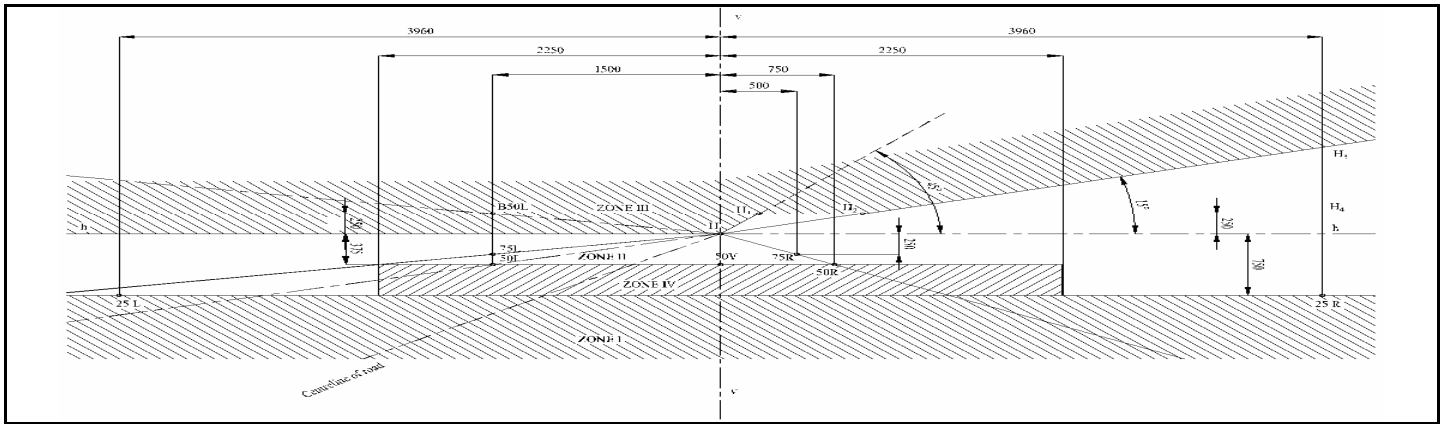


Standardization	Limit the Green	$y = 0.150 + 0.640 x$	X :	0,318
	Limit with the Green-Yellowish	$y = 0.440$	Y :	0,325
	Limit with Yellow	$x = 0.500$	Z :	0,357
	Limit with Purpura-Reddish	$y = 0.382$	Values	
	Limit with Purpura-Reddish	$y = 0.050 + 0.750 x$		
	Limit with Blue	$x = 0.310$		

RESULT: APPROVED

The point must be within the approved area.

The results presented in the present Document have restricted significance and they are only applied to the rehearsed sample. The reproduction of the document for another ends can only be made integrally, without any alteration



LOW BEAM & HIGH BEAM

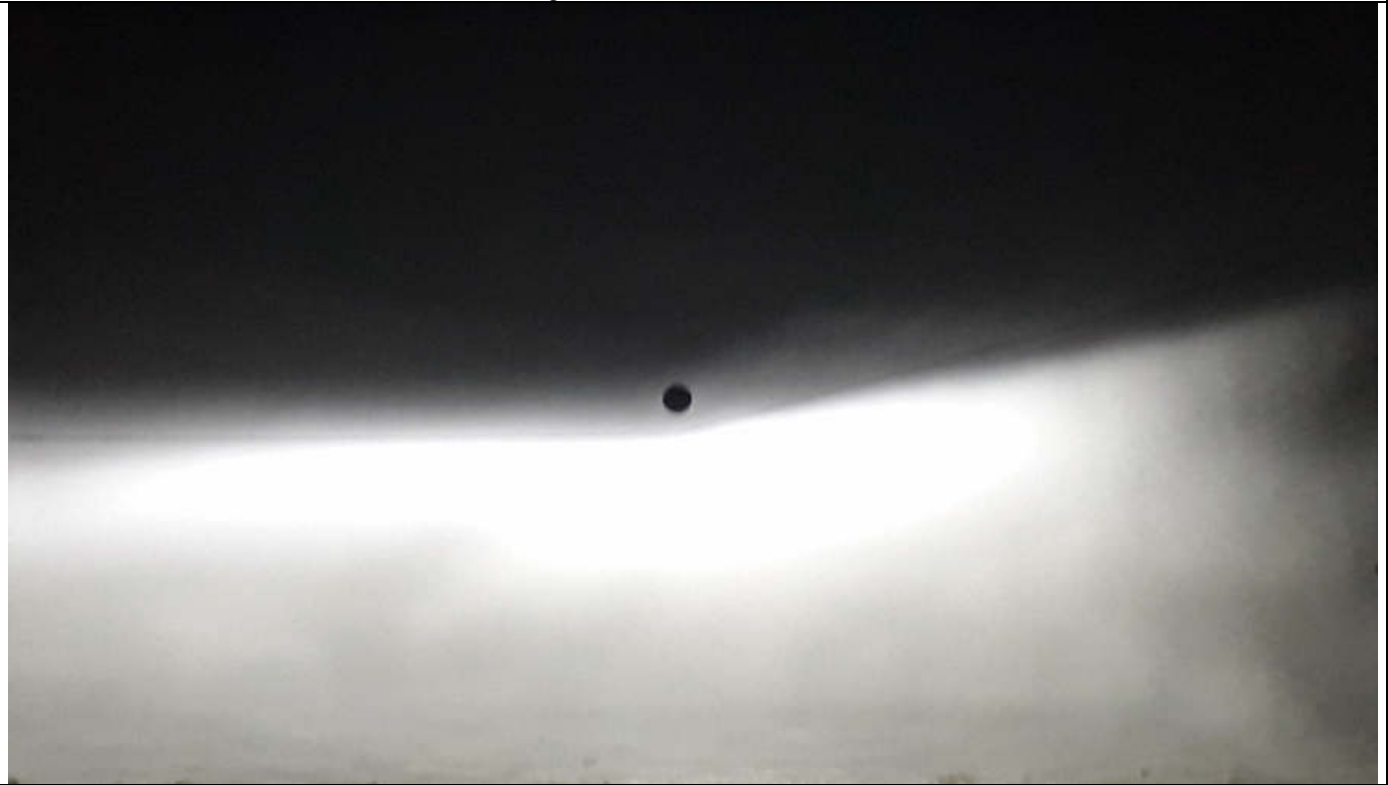
ECE R112 / CONTRAN 22/07

Photometric Values in Lux at 25m

POINTS	PRODUCTION SAMPLE		VALUES	
	MIN.	MAX.	SAMPLE LH	SAMPLE RH
8L/4U	0,24	1,00	0,06	0,07
V /4U	(sum of this points)	1,00	0,04	0,04
8R/4U		1,00	0,19	0,20
4R/2U	0,48	1,00	0,20	0,19
V /2U	(sum of this points)	1,00	0,21	0,21
4L/2U		1,00	0,25	0,25
4L/ H	0,16	1,00	0,99	0,97
8L/H	0,08	1,00	0,98	0,95
H/V	-----	1,00	0,98	0,95
B50L	-----	0,60	0,34	0,33
75L	-----	14,40	5,05	4,82
75R	9,60	-----	12,58	12,22
50R	9,60	-----	35,70	34,20
50V	4,80	-----	17,53	17,90
50L	-----	17,28	13,75	13,15
25L	1,60	-----	17,13	16,30
25R	1,60	-----	3,83	5,37
ZONE IV	2,40	-----	14,03	13,36
ZONE I	-----	≤2x50R	43,20	42,34
ZONE III	-----	1,0	0,99	0,96
RESULT:			APPROVED	APPROVED
HIGH BEAM				
H/V	≥ 0,8 E _{máx}	288,00	53,27	51,17
5E	4,8	-----	23,10	27,00
2,5E	19,2	-----	44,28	48,61
2,5D	19,2	-----	30,47	30,78
5D	4,8	-----	10,20	15,46
EMÁX	38,40	288,00	61,50	58,51
RESULT:			APPROVED	APPROVED

The results presented in the present Document have restricted significance and they are only applied to the rehearsed sample. The reproduction of the document for another ends can only be made integrally, without any alteration

Projection LOW BEAM

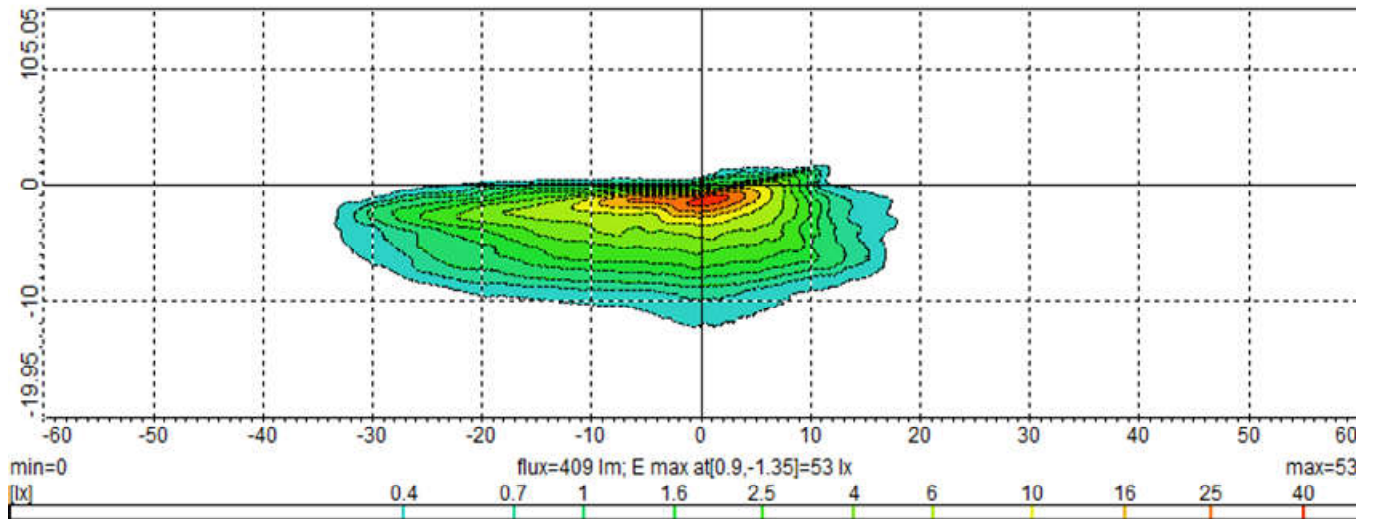


Projection HIGH BEAM

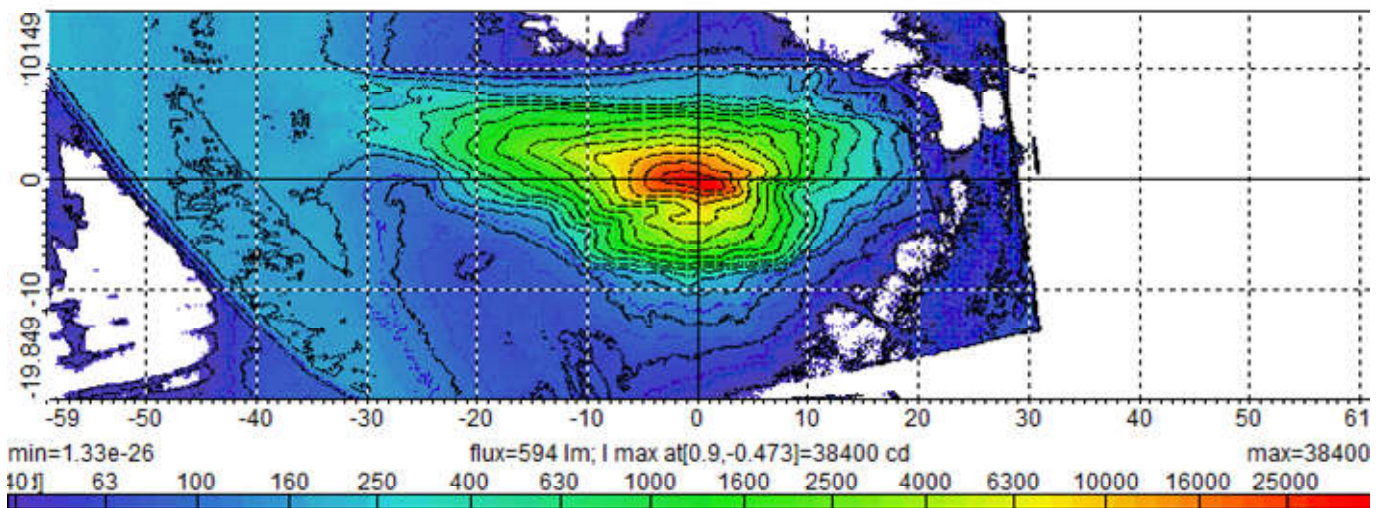


The results presented in the present Document have restricted significance and they are only applied to the rehearsed sample. The reproduction of the document for another ends can only be made integrally, without any alteration

ISOLUX Wall View Low Beam



ISOLUX Wall View High Beam



EXIT DATE: 11/07/2018

ANALYST:
ALEX FONSECA DE OLIVEIRA

SUPERVISION:
JARBAS ENZENBERG
MÁRCIO CLAUDINO

COPIES DISTRIBUTION:
Leonardo Figueiredo

The results presented in the present Document have restricted significance and they are only applied to the rehearsed sample. The reproduction of the document for another ends can only be made integrally, without any alteration

ANEXO - LABORATORY'S REPORT Nº 3690-18

Lista de marca/modelos/versão/ano equipadas com farol utilizado no ensaio Nº 3690-18

Chevrolet Onix Hatch Joy 1.0 8V câmbio manual Econo.Flex 4P 2016, 2017, 2018
Chevrolet Onix Hatch LS 1.0 8V SPE/4 câmbio manual Flex 4P 2012, 2013, 2014, 2015, 2016
Chevrolet Onix Hatch LT 1.0 8V SPE/4 câmbio manual Flex 4P 2012, 2013, 2014, 2015, 2016
Chevrolet Onix Hatch LT 1.4 8V câmbio manual SPE/4 Flex 4P 2012, 2013, 2014, 2015, 2016
Chevrolet Onix Hatch LT 1.4 8V SPE/4 câmbio automático Flex 4P 2013, 2014, 2015, 2016
Chevrolet Onix Hatch LT Lollapalooza 1.0 8V SPE/4 câmbio manual Flex 4P 2014, 2015
Chevrolet Onix Hatch LT Seleção 1.0 8V SPE/4 câmbio manual Flex 4P 2014, 2015
Chevrolet Prisma Advantage 1.0 8V SPE/4 câmbio manual Flex 2014, 2015, 2016
Chevrolet Prisma Advantage 1.4 8V SPE/4 câmbio automático Flex 2015, 2016
Chevrolet Prisma Joy 1.0 8V câmbio manual Econo.flex 2016, 2017, 2018
Chevrolet Prisma LS 1.0 8V SPE/4 Flex 2013, 2014, 2015, 2016
Chevrolet Prisma LS 1.4 8V SPE/4 Flex 2013, 2014, 2015, 2016
Chevrolet Prisma LT 1.0 8V SPE/4 câmbio manual Flex 2013, 2014, 2015, 2016
Chevrolet Prisma LT 1.4 8V SPE/4 câmbio automático Flex 2013, 2014, 2015, 2016
Chevrolet Prisma LT 1.4 8V SPE/4 câmbio manual Flex 2013, 2014, 2015, 2016

Versão: 0	Atualização: Ago/2018	Resp: Lumileds Iluminação Brasil Ltda
-----------	-----------------------	---------------------------------------