



INDÚSTRIAS ARTEB S/A  
**LABORATÓRIO CORPORATIVO**  
 Av. Piraporinha 1221 – Vila Olga  
 São Bernardo do Campo -SP  
 Tel. (11) 4341-9841 Fax (11) 4341-9841  
 e-mail: laboratorio@arteb.com.br

## LABORATORY'S REPORT



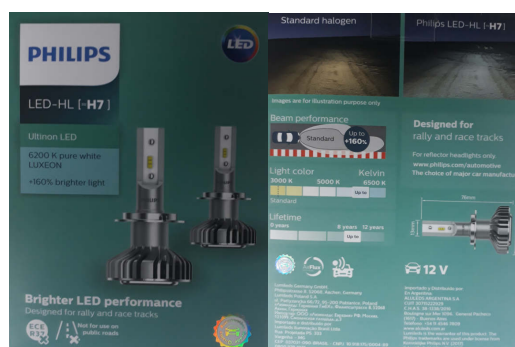
PHYSICAL LABORATORY ( )  
 CHEMICAL LABORATORY ( )  
 PERFORMANCE LABORATORY ( )  
 PHOTOMETRIC LABORATORY (X)

|   |                       |                                   |
|---|-----------------------|-----------------------------------|
| DENOMINATION: <u>HEADLAMP VW FOX</u><br>Note: Commercial name of the models that use this headlamp design according to: Anexo_3694_Lista de Aplicação.  |                       | CODE / NUMBER: VW 219 / 218       |
| CUSTOMER: Lumileds Iluminação do Brasil Ltda  |                       | SOLICITED BY: Leonardo Figueiredo |
| CUSTOMER ADDRESS: Al. Rio Negro, 585 Ed. Jaçari - 4º A Conjunto 44,45 CEP: 06454-000 Barueri - SP – Brazil  |                       |                                   |
| SS N°   | NUMBER OF SAMPLES: 02 | ANALYST: ALEX FONSECA DE OLIVEIRA |
| BEGIN'S DATE: 22/06/2018  | TEMPERATURE: 23,0 °C  | HUMIDITY: 60 %                    |
| EQUIPAMENTOS UTILIZADOS:<br>PHOTOMETER ILFF 002 - CERTIFICATE: 85.278 / 85.279 /<br>CALIBRATE: 03/30/2017 - NEXT CALIBRATION: 30/03/2019<br>POWER SUPPLY ILFF 002/02 - CERTIFICATE: R0674 / 2017<br>CALIBRATED: 27/03/2017– - NEXT CALIBRATION: 27/03/2019<br>SPECTRORADIOMETRO EL-10 - CERTIFICATE: L-001-17<br>CALIBRATE: 09/20/2017 - NEXT CALIBRATION: 20/09/2018 |                       |                                   |
| SPECIFICATIONS: ECE R112 / CONTRAN 227/07   |                       |                                   |

OBSERVATIONS: Lumileds Iluminação Brasil LTDA are responsible about the control of Anexo\_3694\_Lista de Aplicação.

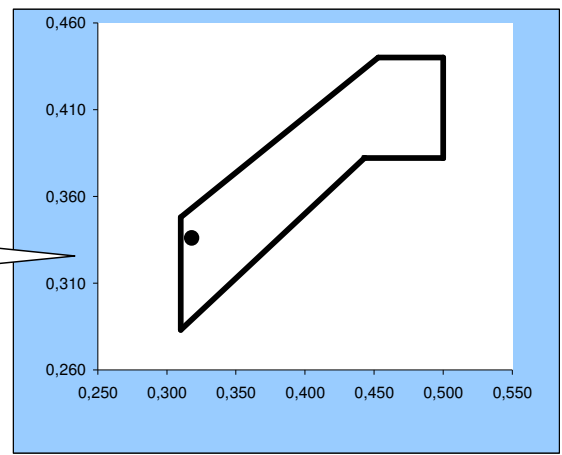
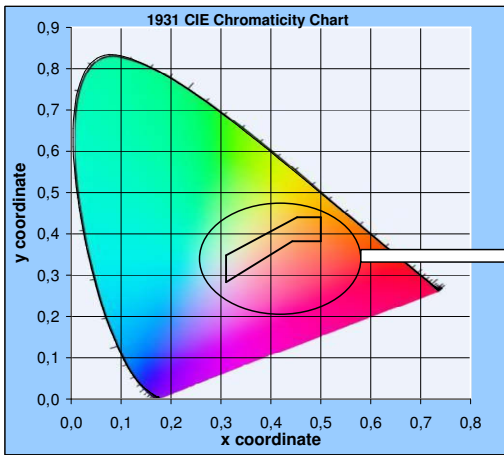
## INFORMATION ABOUT LOW BEAM:

VOLTAGE : 13,50 V  
 PRODUTO: LED-HL [-H7]  
 PART NUMBER:11972XXX  
 MARCA: PHILIPS



The results presented in the present Document have restricted significance and they are only applied to the rehearsed sample. The reproduction of the document for another ends can only be made integrally, without any alteration

**COLORIMETRY ECE R112 / CONTRAN 227/07**  
**LOW BEAM / LED COLOUR (WHITE) TEMP: 7610 K**

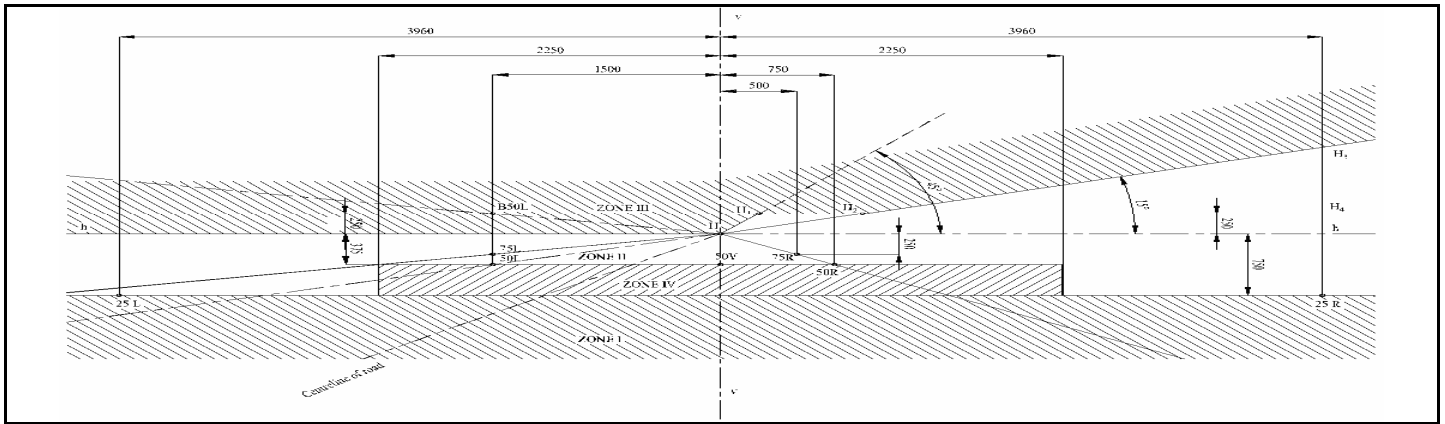


|                 |                                |                       |               |              |
|-----------------|--------------------------------|-----------------------|---------------|--------------|
| Standardization | Limit the Green                | $y = 0.150 + 0.640 x$ | <b>X :</b>    | <b>0,318</b> |
|                 | Limit with the Green-Yellowish | $y = 0.440$           | <b>Y :</b>    | <b>0,336</b> |
|                 | Limit with Yellow              | $x = 0.500$           | <b>Z :</b>    | <b>0,346</b> |
|                 | Limit with Purpura-Reddish     | $y = 0.382$           | <b>Values</b> |              |
|                 | Limit with Purpura-Reddish     | $y = 0.050 + 0.750 x$ |               |              |
|                 | Limit with Blue                | $x = 0.310$           |               |              |

**RESULT: APPROVED**

The point must be within the approved area.

The results presented in the present Document have restricted significance and they are only applied to the rehearsed sample. The reproduction of the document for another ends can only be made integrally, without any alteration



**LOW BEAM**

*Specification: ECE R112 / CONTRAN 227/07*

*Photometric Values in Lux at 25m*

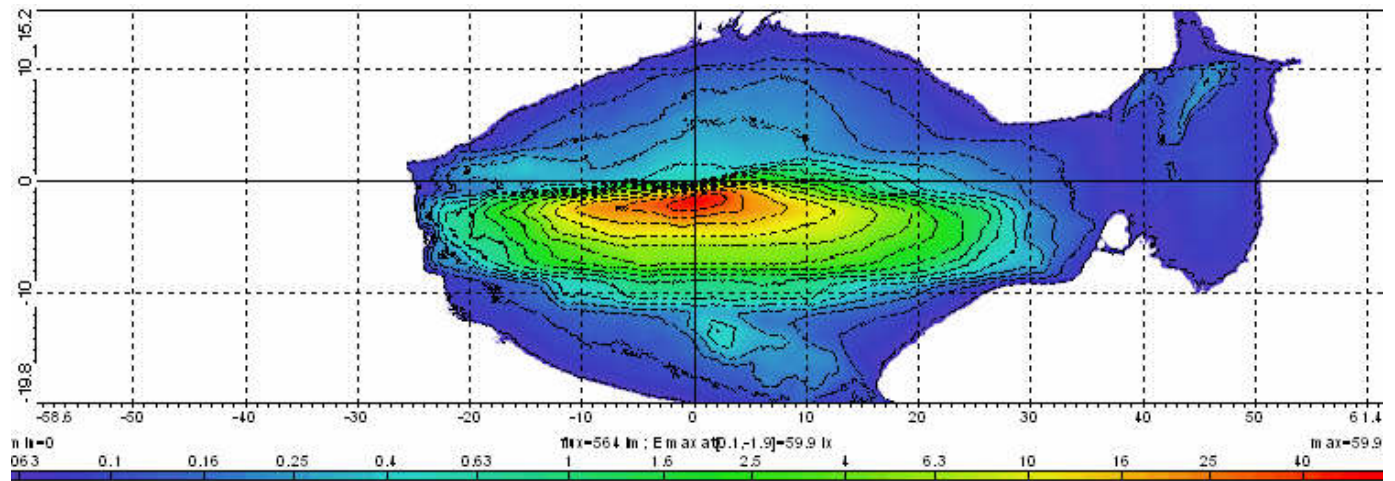
| POINTS         | INITIAL SAMPLE       |         | VALUES          |                 |
|----------------|----------------------|---------|-----------------|-----------------|
|                | MIN.                 | MAX.    | SAMPLE LH       | SAMPLE RH       |
| 8L/4U          | 0,30                 | 0,70    | 0,16            | 0,17            |
| V /4U          | (sum of this points) | 0,70    | 0,29            | 0,30            |
| 8R/4U          |                      | 0,70    | 0,26            | 0,27            |
| 4R/2U          | 0,60                 | 0,70    | 0,31            | 0,31            |
| V /2U          | (sum of this points) | 0,70    | 0,37            | 0,37            |
| 4L/2U          |                      | 0,70    | 0,37            | 0,37            |
| 4L/ H          | 0,20                 | 0,70    | 0,37            | 0,36            |
| 8L/H           | 0,10                 | 0,70    | 0,53            | 0,51            |
| H/V            | -----                | 0,70    | 0,67            | 0,66            |
| B50L           | -----                | 0,40    | 0,39            | 0,39            |
| 75L            | -----                | 12,00   | 4,03            | 3,83            |
| 75R            | 12,00                | -----   | 12,13           | 12,09           |
| 50R            | 12,00                | -----   | 28,01           | 28,67           |
| 50V            | 6,00                 | -----   | 16,62           | 17,36           |
| 50L            | -----                | 15,00   | 7,36            | 7,96            |
| 25L            | 2,00                 | -----   | 13,39           | 12,75           |
| 25R            | 2,00                 | -----   | 11,66           | 11,34           |
| ZONE IV        | 3,00                 | -----   | 6,16            | 5,85            |
| ZONE I         | -----                | ≤ 2x50R | 55,90           | 54,02           |
| ZONE III       | -----                | 0,70    | 0,69            | 0,68            |
| <b>RESULT:</b> |                      |         | <b>APPROVED</b> | <b>APPROVED</b> |

The results presented in the present Document have restricted significance and they are only applied to the rehearsed sample. The reproduction of the document for another ends can only be made integrally, without any alteration

*Projection LOW BEAM*



*ISOLUX Wall View Low Beam*



**EXIT DATE: 11/07/2018**

**ANALYST:**  
ALEX FONSECA DE OLIVEIRA

**SUPERVISION:**  
JARBAS ENZENBERG  
MÁRCIO CLAUDINO

**COPIES DISTRIBUTION:**  
Leonardo Figueiredo

The results presented in the present Document have restricted significance and they are only applied to the rehearsed sample. The reproduction of the document for another ends can only be made integrally, without any alteration

## ANEXO - LABORATORY'S REPORT Nº 3694-18

### Lista de marca/modelos/versão/ano equipadas com farol utilizado no ensaio Nº 3694-18

|   |                              |   |
|---|------------------------------|---|
| Volkswagen CrossFox 1.6 16V MSI Flex 4P 2014, 2015, 2016, 2017, 2018                      |                              |   |
| Volkswagen CrossFox 1.6 16V MSI I-Motion Flex 4P 2014, 2015, 2016, 2017, 2018             |                              |   |
| Volkswagen CrossFox 1.6 8V I-Motion Total Flex 4P 2014, 2015, 2016                        |                              |   |
| Volkswagen CrossFox 1.6 8V Total Flex 4P 2014, 2015, 2016                                 |                              |   |
| Volkswagen CrossFox Urban White 1.6 16V MSI Flex 4P 2016, 2017, 2018                      |                              |   |
| Volkswagen CrossFox Urban White 1.6 16V MSI I-Motion Flex 4P 2016, 2017, 2018             |                              |   |
| Volkswagen Fox BlueMotion 1.0 12V Total Flex 4P 2014, 2015, 2016, 2017, 2018              |                              |   |
| Volkswagen Fox Comfortline 1.0 12V Flex 4P 2015, 2016, 2017, 2018                         |                              |   |
| Volkswagen Fox Comfortline 1.0 TEC 8V Total Flex 4P 2014, 2015, 2016, 2017, 2018          |                              |   |
| Volkswagen Fox Comfortline 1.6 8V I-Motion Total Flex 4P 2014, 2015, 2016, 2017, 2018     |                              |   |
| Volkswagen Fox Comfortline 1.6 8V Total Flex 4P 2014, 2015, 2016, 2017, 2018              |                              |   |
| Volkswagen Fox Connect 1.6 8V Flex 4P 2017, 2018  |                              |   |
| Volkswagen Fox Connect 1.6 8V I-Motion Total Flex 4P 2017, 2018                           |                              |   |
| Volkswagen Fox Highline 1.6 16V MSI Flex 4P 2014, 2015, 2016, 2017, 2018                  |                              |   |
| Volkswagen Fox Highline 1.6 16V MSI I-Motion Flex 4P 2014, 2015, 2016, 2017, 2018         |                              |   |
| Volkswagen Fox Pepper 1.6 16V MSI Flex 4P 2015, 2016, 2017, 2018                          |                              |   |
| Volkswagen Fox Pepper 1.6 16V MSI I-Motion Flex 4P 2015, 2016, 2017, 2018                 |                              |   |
| Volkswagen Fox Rock in Rio 1.6 8V Flex 4P 2015, 2016                                      |                              |   |
| Volkswagen Fox Run 1.6 8V Flex 4P 2016, 2017, 2018  |                              |   |
| Volkswagen Fox Track 1.0 12V Flex 4P 2015, 2016, 2017, 2018                               |                              |   |
| Volkswagen Fox Track 1.6 8V Total Flex 4P 2015, 2016, 2017, 2018                          |                              |   |
| Volkswagen Fox Trendline 1.0 12V Flex 4P 2015, 2016, 2017, 2018                           |                              |   |
| Volkswagen Fox Trendline 1.0 TEC 8V Total Flex 4P 2014, 2015, 2016, 2017, 2018            |                              |   |
| Volkswagen Fox Trendline 1.6 8V Total Flex 4P 2014, 2015, 2016, 2017, 2018                |                              |   |
| Volkswagen Fox Xtreme 1.6 8V Flex 4P 2017, 2018   |                              |   |
| Volkswagen SpaceFox Comfortline 1.6 16V MSi Flex 4P 2014, 2015, 2016, 2017, 2018          |                              |   |
| Volkswagen SpaceFox Comfortline 1.6 16V MSi I-Motion Flex 4P 2014, 2015, 2016, 2017, 2018 |                              |   |
| Volkswagen SpaceFox Comfortline 1.6 8V VHT Flex 4P 2014, 2015, 2016, 2017, 2018           |                              |   |
| Volkswagen SpaceFox Comfortline 1.6 8V VHT I-Motion Flex 4P 2014, 2015, 2016, 2017, 2018  |                              |   |
| Volkswagen SpaceFox Highline 1.6 16V MSi Flex 4P 2014, 2015, 2016, 2017, 2018             |                              |   |
| Volkswagen SpaceFox Highline 1.6 16V MSi I-Motion Flex 4P 2014, 2015, 2016, 2017, 2018    |                              |   |
| Volkswagen SpaceFox SpaceCross 1.6 16V I-Motion Flex 4P 2014, 2015, 2016, 2017, 2018      |                              |   |
| Volkswagen SpaceFox SpaceCross 1.6 16V MSi Flex 4P 2014, 2015, 2016, 2017, 2018           |                              |   |
| Volkswagen SpaceFox Trendline 1.6 8V Flex 4P 2015, 2016, 2017, 2018                       |                              |   |
| Volkswagen SpaceFox Trendline 1.6 8V I-Motion Flex 4P 2015, 2016, 2017, 2018              |                              |   |
| <b>Versão: 0</b>  | <b>Atualização: Ago/2018</b> | <b>Resp: Lumileds Iluminação Brasil Ltda.</b> |